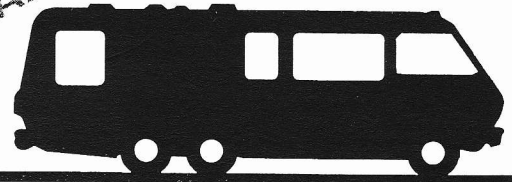


GMC CASCADERS NEWS

RETURN YOUR RENEWAL FORM!

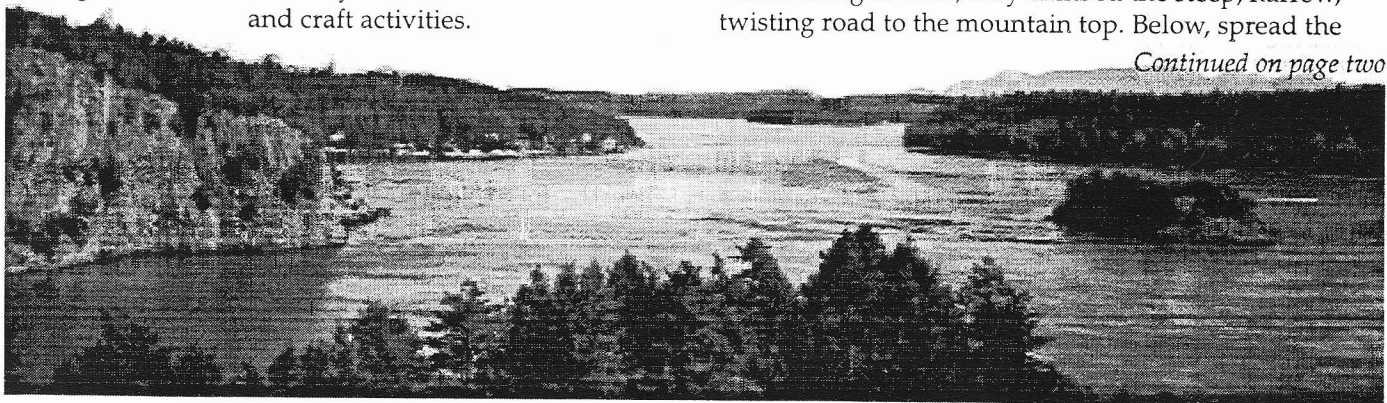


September 1994

Travelling Up and Down at Mt. Vernon Rally

Great weather, gracious hospitality, adventures on turbulent water and scenic island landscapes treated Cascaders at the August 1994 rally in Mt. Vernon, Washington. The host team, composed of Jack and Doris Mast, Ed and Mary Reed and Ted and Jane Swanson, arranged hook-ups and food at the Elks Club of Mt. Vernon.

From there many of us boarded a bus on Saturday for parts west and wet. Journeying 20 miles through rich and historic farm country, Jim Poth of Easy Going Outings, filled us in on many local farm facts and art and craft activities.



Continued on page two

Arriving in LaConner, half the group boarded the Zodiac-style jet boat, Viking Explorer, for a remarkably steady ride through the turbulent, wild waters of Deception Pass. Once through the pass, the Viking Explorer trolled quietly around Deception Island in search of sea life close-ups, returning to dock at Deception Pass State Park.

In the meantime, the rest of the group rearranged themselves on the tour bus and headed a few miles to the base of Fidalgo Island's 1,300 foot Mt. Erie. Transferring to vans, they climbed the steep, narrow, twisting road to the mountain top. Below, spread the

Yakima Nation Trip is Next

Hosts Carl and Jean Gwynn and co-hosts Hubert and Mary Ellen Watson have plans for Cascaders in Toppenish, Washington, on Thursday, September 22nd. Pack up your coach, some hearty hors d'oeuvres, a bowl of fruit and head for Indian territory.

Look forward to good food, a mural tour via horse-drawn wagon, "Open Coach" visitations; after that, more good food, a ladies-only hands-on driving and coach-handling seminar and a concurrent men-only

technical seminar on front-end height and more. That will be followed by more good food and lots of "east of the Cascades" September weather. Other local attractions include several museums and Washington's famous wine country. Note, however, that we will be camping within the Yakima Indian Reservation and **NO ALCOHOLIC BEVERAGES ARE ALLOWED**. Please respect this law.

For answers to last minute rally questions, call Carl and Jean at 1-509-633-2208.

Rally Schedule 1994-95

DATES	LOCATION	SITE	HOSTS
Sept. 23-25	Toppenish WA	Yakima Nations RV	Gwynns and Watsons
December 2-4	Woodburn OR	Woodburn RV Park	Frys and crew
February 17-20	Tokeland WA	Bay Shore RV Park	Scolmans, Diers

Additional rallies are scheduled throughout 1995; watch for details in future issues of the *GMC Cascaders News*.

CLASSIFIED

SALE: Left side exhaust manifold for 455, used one year; Driver and co-driver seats with swivel base, orange/beige in color; Six-inch round bathroom vent with fan; 14" standard GMC roof vent. Terry Morris at 206-763-1758, Seattle, WA

MAKE OFFER: Complete set of rear pins for '74 GMC \$650. No reasonable offer refused for the following original equipment from a '76 Eleganza, all in good condition and working order: Rear dinette seats with pedestal table; instrument panel, radio, gauges, switches and lights; vacuum cleaner and hoses; round bathroom fan; exhaust manifolds, both sides. Carl Gwynn at 509-633-2208, Coulee Dam, WA

GMCASCADERS NEWS

President Becky Ragsdale
21412 98th Ave S
Kent, WA 98031
206-854-1642

1st Vice President
Carol Baxter
PO Box 5090
Dockton, WA 98070
206-463-9045

2nd Vice President/Wagon Master
Glenn Diers
6535 Seaview NW #601B
Seattle, WA 98117
206-782-2131

Secretary/Newsletter Editor
Priscilla Hardin
2970 NW Hayes Ave,
Corvallis, OR 97330
503-752-3811

Treasurer Ruth Diers
6535 Seaview NW #601B
Seattle, WA 98117
206-782-2131

The GMC Cascader News is published six times annually. GMC coach owners interested in membership should contact any officer for information.

Mt Vernon Rally—continued from page one

bays, channels and islands of Whidbey Island, Skagit Bay, Pedilla Bay and the San Juans. The Atlantic salmon fish farm, viewed close-up by Viking Explorer passengers, was also visible from Mt. Erie. The snow-covered peaks of the Olympics and the North Cascades stayed shyly behind cloud cover... a good reason to return for another look. Reunited at Deception Pass State Park, all the travelers devoured the catered picnic lunch arranged by our intrepid guide. Great choice, Jim.

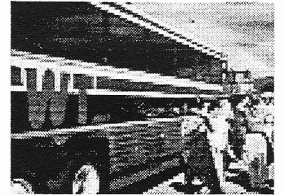
A short hike around the point of the park settled our lunches in time for the sub-groups to swap roles and continue—boaters by bus and bus riders by boat. Boaters waived up at bus riders as they roared under the Rainbow bridge.

Back in Mt. Vernon, we had time to relax before a fine banquet at the Elks Club. After dinner, live music drew many Cascaders to the dance floor for the physical fitness program we had neglected during bus and boat travel.

Sunday morning offered another fine Elks Club meal—champagne breakfast buffet. Surprise breakfast treat... Tom and Lillian Henry, Cascaders from Mt. Vernon, dropped by to say "Hello." Lillian was celebrating both her 65th birthday AND her retirement.

The subsequent business meeting polished off the rally agenda. Elections placed the existing executive board back in the driver's seat for another year... a tribute, no doubt, to their ability to conduct business in the midst of such disruptions as Denny Allen teaching grapes to swim in his champagne and Bob Fry loading his plate ONE MORE TIME!

Noontime "Good-byes" sent Cascaders their separate ways just before overcast skies began to drip on travelers.

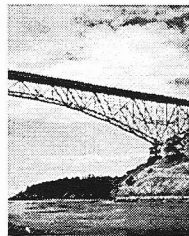


Above: Boarding a BIG coach.

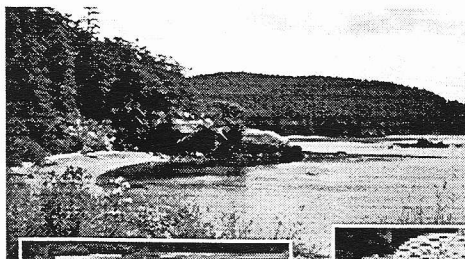
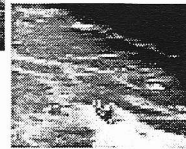


Left: Sherry Smith finds a new persona in her jet-boat life vest!

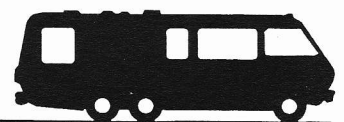
Below: Like sardines in a can, "happy" Cascaders prepare to thread the Pass.



Above and right: The view of/from Rainbow Bridge.



Deception Pass lunch break—the bay, above left; picnic dessert, above; Jim Poth, tour guide, left;



Minutes

Mount Vernon Rally business meeting—8/21/94

The meeting was called to order at 10:31 am by Becky Ragsdale, president. She introduced guests Godfrey and Jennifer Ferguson, Del and Vi Preston (now members), and Janet Ford, mother of Gloria Morris. She also welcomed John and Lorraine Haugen, Cascaders attending their first rally. Other members attending were:

Denny & Fran Allen	Walt & Liz Ovens
George & Carol Baxter	Don & Luana Perry
Earl & Marley Becker	Gerry Pryde
Ed & Louise Blaise	Ken & Becky Ragsdale
Jack & Cathy Cupples	Ed & Mary Reed
Glenn & Ruth Diers	Bernie & Janie Rhoades
Clarence & Elsie Estridge	Jim & Gerry Seitz
Don & Dorothy Forster	Greg & Sherry Smith
Bob & Elaine Fry	Bob & Elizabeth Smith
Herb & Doreen Graham	Ted & Jane Swanson
Bill & Pris Hardin	Tom & Margie Thompson
John & Lorraine Haugen	Ed & Hedy Ulmer
Carl & Helen Hove	Bob & Bonnie
Jack & Doris Mast	Van Allsburg
Terry & Gloria Morris	Ken & Jean Wilson

Secretary's Report—Minutes were approved as printed in the last newsletter— moved (M) by Gerry Pryde and seconded (S) by George Baxter; passed (P) = (MSP—Pryde, G./Baxter, G.). Pris Hardin thanked members for contributing photos of past rallies for newsletter publication.

Treasurer's Report—Ruth Diers announced that we have 166 paid members. The treasury holds \$2,215.86 of which \$1,232.00 is at work in the form of rally advances and jacket inventory. We now have X-large jackets in stock, too.

Vice-president's Report—Carol Baxter has corresponded with the hosts of our Canadian rally and with Bud Sunderlund who has had triple-bypass surgery. Joe Baker has suffered a back injury and Russ Stephens was forced to cancel attendance at the

Tech Tips

- Much is said (and written) about weight and its distribution for best performance. Did you know that most Oregon Department of Transportation truck scales give weights on a digital reader board even when the scales are closed? Weights are displayed in 50-pound increments. We have weighed each corner of our coach separately on these public scales. The manual for our '77 Kingsley gives gross weights as: Front, 4,200; and Rear 7,500. Our spread was: Front L-2100, R-1900 for total front of 4100; Rear L-3950, R-4000 for a total of 7950.

Mt. Vernon rally due to a leg injury.

Wagon Master's Report— Glen Diers presented the roster of future rallies to date: September '94 in Toppenish, WA; December '94 at Woodburn, OR; February '95 at Tokeland, WA; April '95 at a mystery site; June '95 at Coeur d'Alene, ID; and perhaps Wallowa Lake, OR in August '95. If the Wallowa Lake plans succeed, members may be asked to commit themselves early in 1995 to reserve camp sites.

Report from FMCA National Rally in Puyallup, WA—August, 1994. Approximately eleven Cascader coaches were among the 4,369 motorhomes at or near Puyallup for the event. The program included entertainment, food, trade fair/RV show and technical seminars.

Cascaders who also belong to Western States have already received registration materials for the Western States rally in Kingsburg, CA, on October 5-9, 1994.

Historian's Report—Carol Baxter thanked members for sending pictures for the scrapbooks. She requested that Cascaders contributing photos attach labels identifying events and people in each picture. Keep the visual documentation coming.

Nominating Committee's Report—The committee, consisting of Bob Fry, Doris Mast, and Don Perry, presented the following slate of nominees for the upcoming election: Becky Ragsdale for President, Carol Baxter for Vice President, Pris Hardin for Secretary, Ruth Diers for Treasurer, Cliff Smith for National Director to FMCA and Joe Sawtell as Alternate National Director. Hearing no nominations from the floor, nominations were closed (MSP—Mast, J./ Reed, E).

Election—The secretary cast a unanimous ballot for the entire slate of nominees (MSP—Perry, D/Reed, E.).

Adjournment—MSP—Baxter, G./Fry, E.

- As there are several new members, it bears repeating that one must not set either the hand or foot brake when leveling with the compressor. The coach's height is changed only when the rear wheels can roll toward or away from one another.

Liability Disclaimer: GMC Cascaders, its officers and editors, are not responsible for the validity or accuracy of advice and/or technical notes published in The GMC Cascaders News. Adjustments, revisions or installations made to motorhomes on the basis of information presented in this publication are the responsibility of the individual coach owner.



RETURN ENCLOSED
MEMBERSHIP RENEWAL FORM
NOW!!!

GMC Cascaders
Pris Hardin, Secretary
2970 NW Hayes Ave.
Corvallis, OR 97330

On The Road Again...

- Ken Ragsdale needs help locating his vintage, full-color GMC brochures. He shared them with folks at the Mt. Vernon rally. Please contact him at (206)-854-1642 ASAP if you can help.
- Jane Swanson is very pleased with their copy of *Mountain Directory for Truckers, RV, and Motorhome Drivers*, a new paperback which is now available from Camping World, though she got hers earlier from R&R Publishing, Inc., PO Box 941, Baldwin City, KS 66006-0941 for \$12.95. It gives reliable information on grade percentages, lengths, vehicle restrictions and other details for travel on more than 250 grades and passes in eleven western states. She would be happy to share its information with you.



*View from
the top of
Mt Erie on
Fidalgo
Island—
August
rally, 1994*

CRAVING A MEXICO TRIP?

Two of our members have information for you.

- John Crist plans to sponsor a 19-day motorhome tour into the spectacular Copper Canyon country. If you are interested in such an adventure, contact him immediately at 1-503-649-4000. Registration must be completed soon to join the group.
- Bernie Rhoades, GMC Cascader and Puyallup, Washington architect, has extensive Mexican travel experience. He has offered to volunteer advice and planning tips to any Cascader contemplating a Mexican sojourn. Give him a call at 1-206-863-8917 if you're interested.

